

How to use the SENDBIN command!!

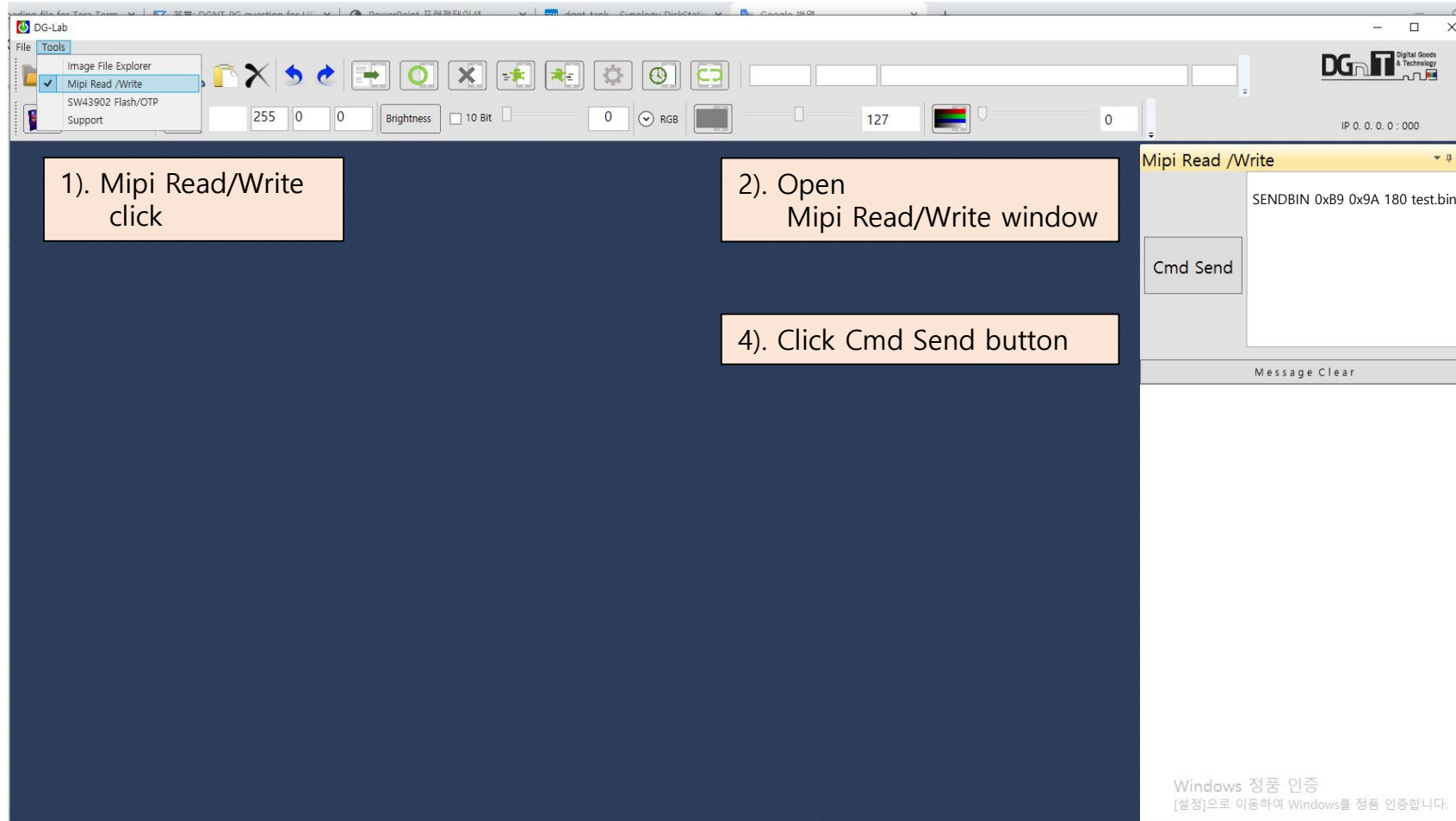
1. DG_lab_126\test.bin [Storage folder of test.bin file]

Check if test.bin file exists in DG_lab_126 folder.

How to use the SENDBIN command!!

2. DG-Lab

Tools -> Mipi Read/Write click



1). Mipi Read/Write
click

2). Open
Mipi Read/Write window

4). Click Cmd Send button

3). Write below command in
mipi read / write window

SENBIN 0xB9 0x9A 180
test.bin